

PROTEIN CHEMISTRY CORE LAB

Protein purification via conventional ion exchange, gel filtration, hydrophobic interaction, and reverse-phase chromatography. Protein analysis including: amino acid composition analysis, neutral and amino sugar analysis, sialic acid composition analysis, peptide mapping via reverse-phase HPLC, oligosaccharide mapping via high pH anion exchange chromatography/pulsed electrochemical detection, ion chromatography, protein quantification by size exclusion chromatography, amino acid sequence determination via automated Edman degradation, and both conventional and automated Western blot analysis.

PROJECTS

Purification of recombinant follicle-stimulating hormone glycoforms.

AREAS OF RESEARCH

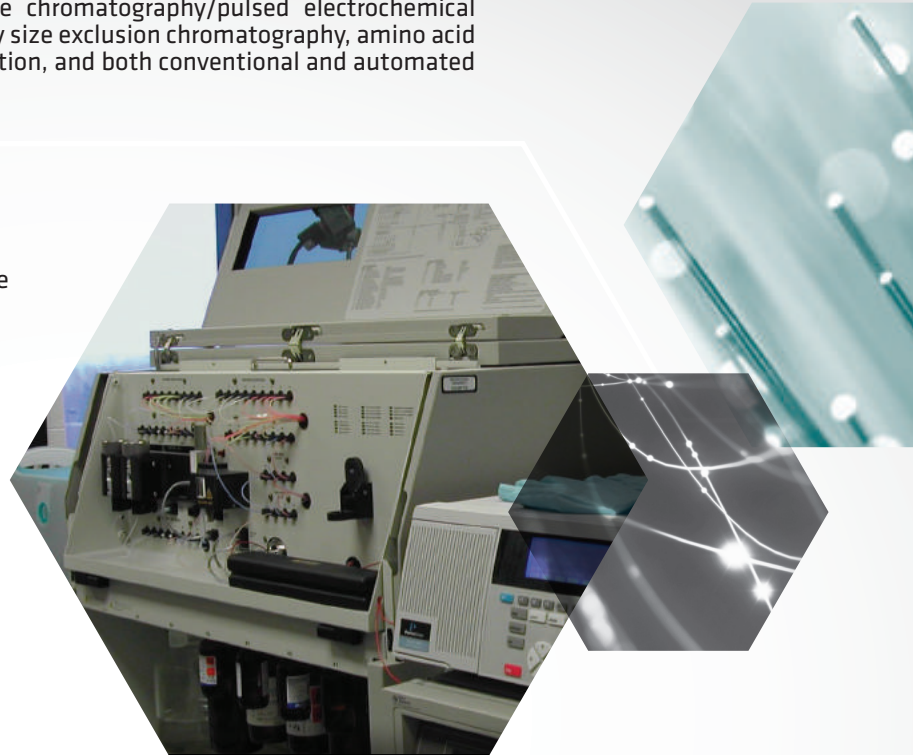
Structure-function of glycoprotein hormones with an emphasis on carbohydrate modulation of gonadotropin function.

CLIENTS

- Pharmaceutical companies
- Basic research scientists

EQUIPMENT

- Dionex dual ICS-5000 HPLC
- Dionex single ICS-5000 HPLC
- 2 Waters Acquity-H UPLC
- Waters Acquity UPLC
- Waters Binary HPLC
- Waters Preparative HPLC
- 5 Waters fraction collector
- 5 SuperFrac fraction collector
- Simon automated Western blot
- Milli-Q water purification system
- Milli-Q Elix + ultrapure water system
- BioTek Synergy Mx plate reader
- 2 Savant SpeedVacs
- VirTis Freezemobile 25EL lyophilizer
- VirTis Freezemobile shell freezer
- Perkin Elmer Wizard 2470 gamma counter
- Perkin Elmer TriCarb 2910TR scintillation counter
- 2 Cary-50 spectrophotometers
- Sorvall RC-3BP+ refrigerated centrifuge
- Sorvall RC-3+ refrigerated centrifuge
- Sorvall RC-6 high speed refrigerated centrifuge
- Roller Bottle Incubator
- BioRad VersaDoc 4000 gel imaging system
- BioRad MXplus Phosphoimager
- Applied Biosystems Procise 494 protein sequencer



CONTACT

GEORGE R. BOUSFIELD, PhD
Lab Director

316-978-6088 | george.bousfield@wichita.edu

WSU | VENTURES

➔ WSUVENTURES.ORG | 978-5363



WICHITA STATE
UNIVERSITY